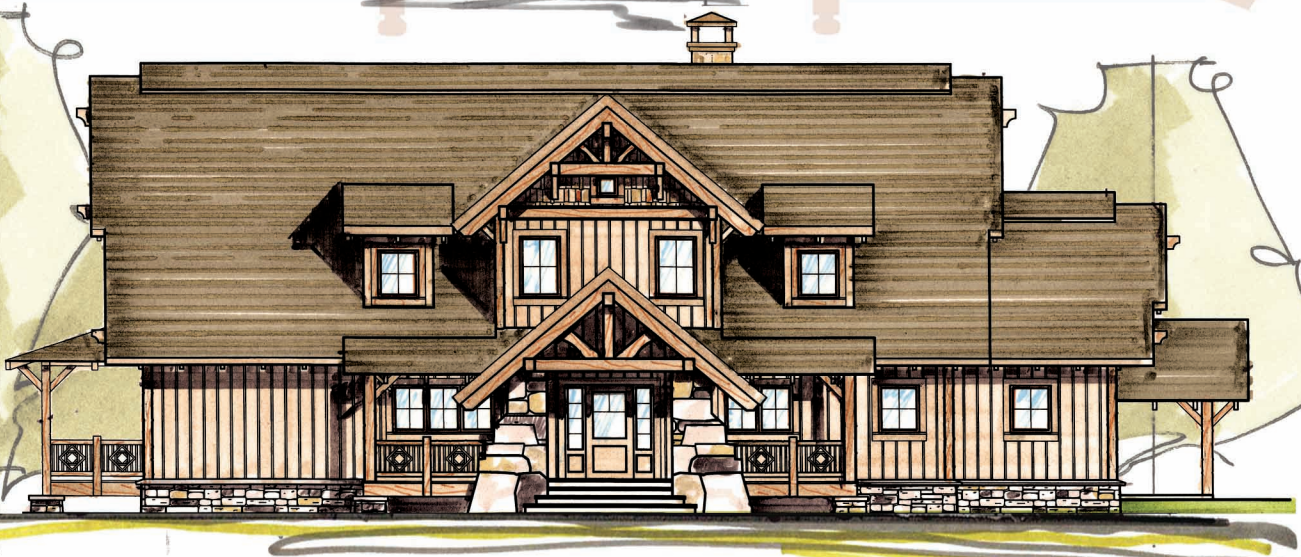


HEAVY TIMBER TRUSS & FRAME RETREAT SERIES

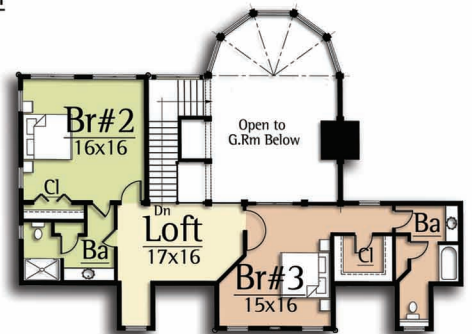


STRAWBERRY LODGE

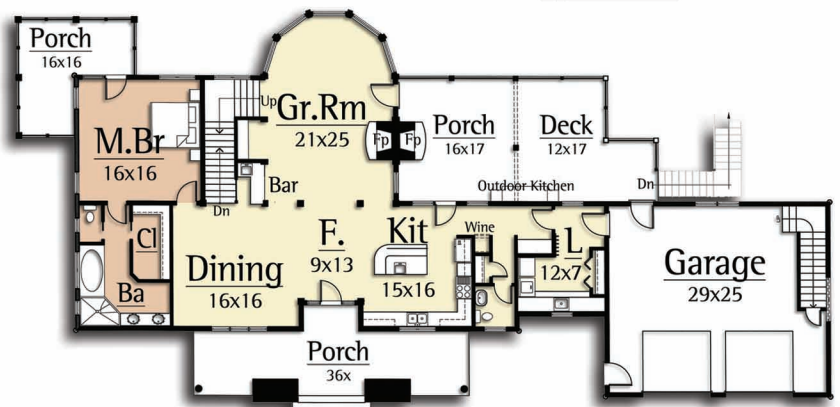
Main Level: 2,014 sf
Upper level: 1,186 sf
Total: 3,200 sf

The Strawberry Lodge features:

- 3 bedrooms
- 3.5 baths
- Vaulted Great Room
- Open Kitchen/Dining/Living
- Timber beams and trusses



Upper Level Plan



Main Level Plan



1-440-564-1090
WWW.HEAVYTIMBERS.COM

DESIGN BY

MOSSCREEK

WWW.MOSSCREEK.NET

800.737.2166