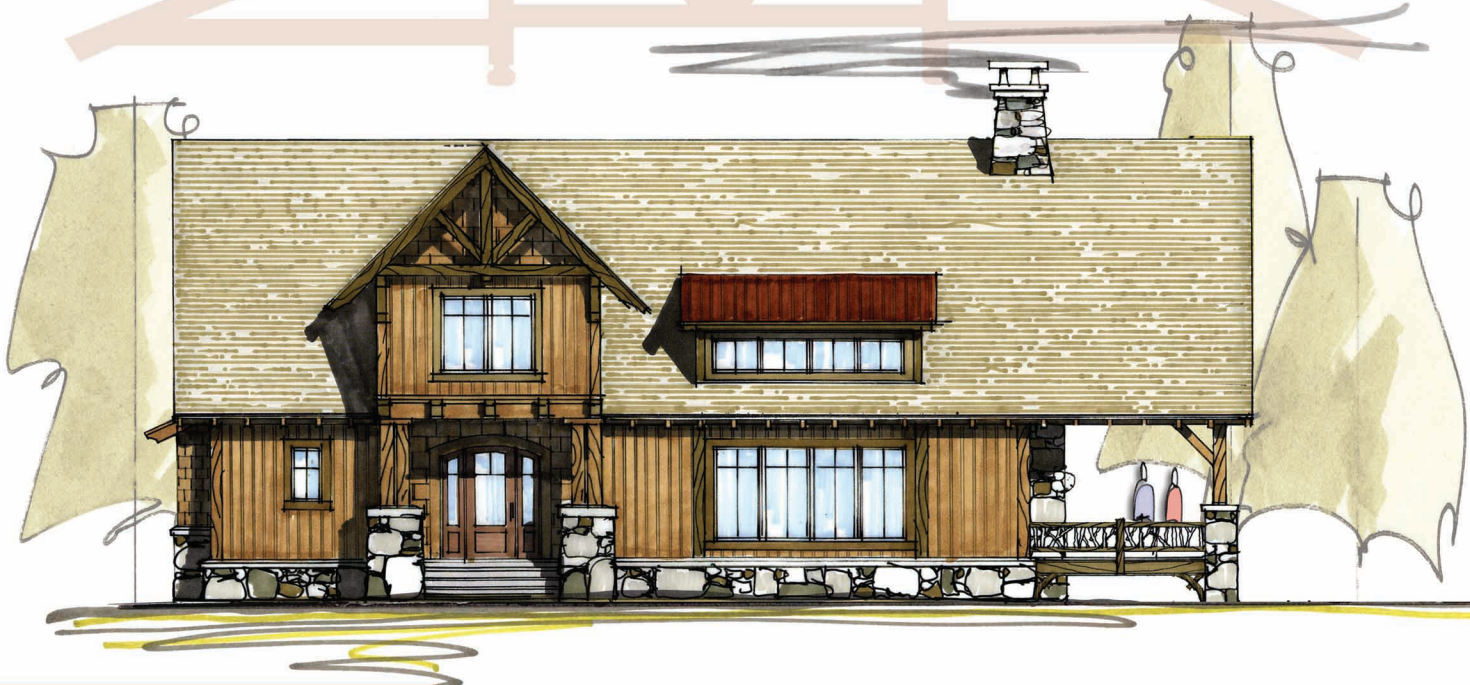


HEAVY TIMBER TRUSS & FRAME RETREAT SERIES

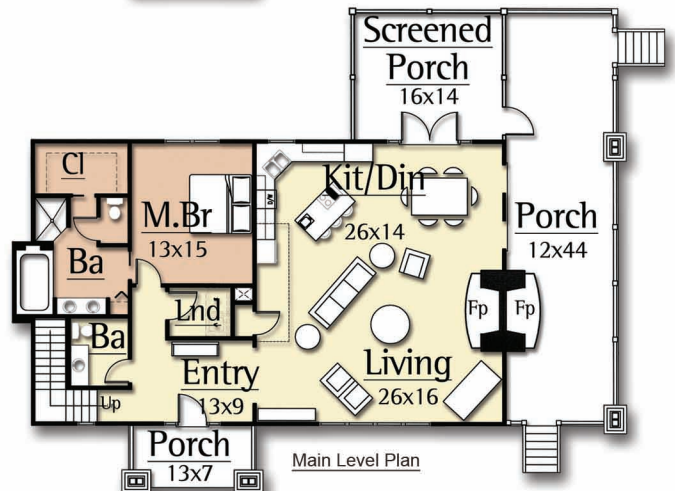
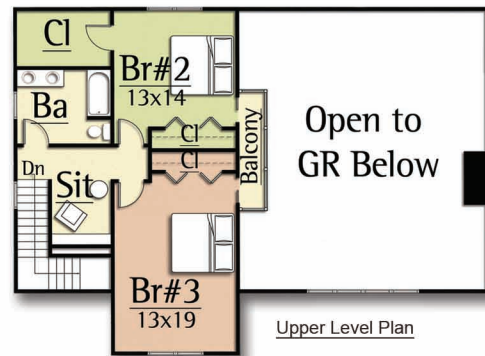


TRAILS END

Main Level: 1,570 sf
Upper level: 800 sf
Total: 2,370 sf

The Trails End features:

- 3 bedrooms
- 2.5 baths
- Vaulted Great Room
- Open Kitchen/Dining/Living
- Timber beams and trusses



1-440-564-1090
WWW.HEAVYTIMBERS.COM

DESIGN BY

MOSSCREEK

WWW.MOSSCREEK.NET

800.737.2166