

# HEAVY TIMBER TRUSS & FRAME RETREAT SERIES

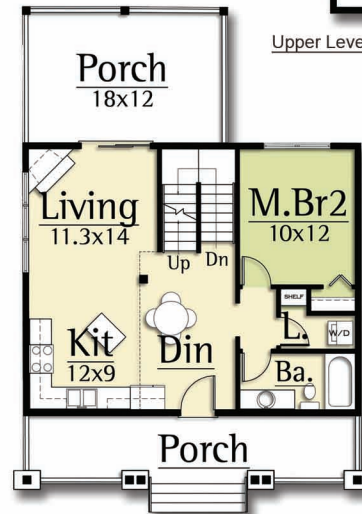
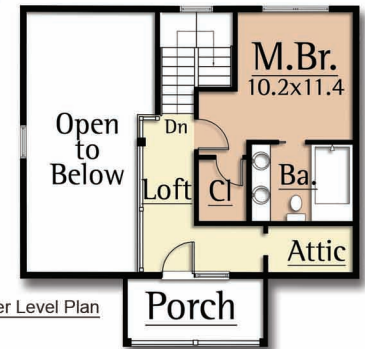


## CIDER MILL

Main Level: 712 sf  
Upper level: 400 sf  
Total: 1,112 sf

The Cider Mill features:

- 2 bedrooms
- 2 bath
- Vaulted Living Room ceiling
- Open Kitchen/Dining/Living
- Timber beams and trusses
- Optional lower level with 2 bedrooms



1-440-564-1090  
WWW.HEAVYTIMBERS.COM

DESIGN BY

MOSSCREEK

WWW.MOSSCREEK.NET

800.737.2166