

HEAVY TIMBER TRUSS & FRAME RETREAT SERIES

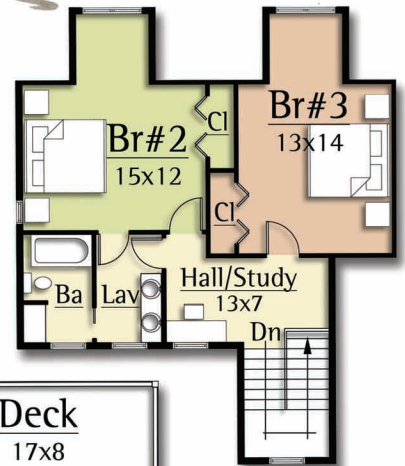


MALLARD

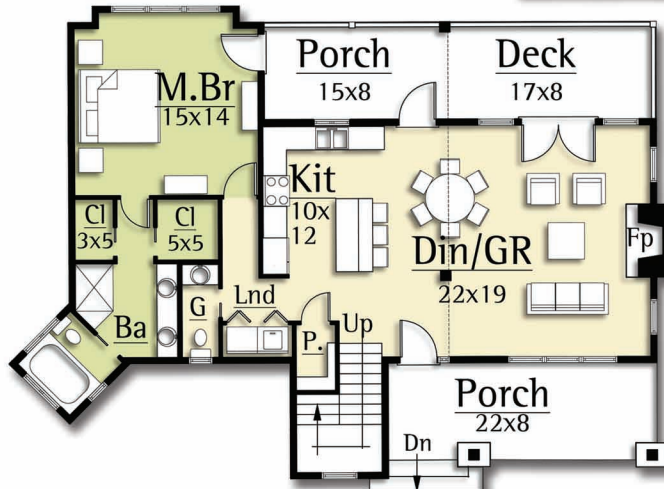
Main Level: 1,192 sf
Upper level: 804 sf
Total: 1,996 sf

The Mallard features:

- 3 bedrooms
- 2.5 baths
- Dramatic Master Bath
- Open Kitchen/Dining/Living
- Timber beams and trusses



Upper Level Plan



Main Level Plan


**HEAVY TIMBER
TRUSS & FRAME**

1-440-564-1090
WWW.HEAVYTIMBERS.COM

DESIGN BY

MOSSCREEK

WWW.MOSSCREEK.NET

800.737.2166