

# HEAVY TIMBER TRUSS & FRAME RETREAT SERIES

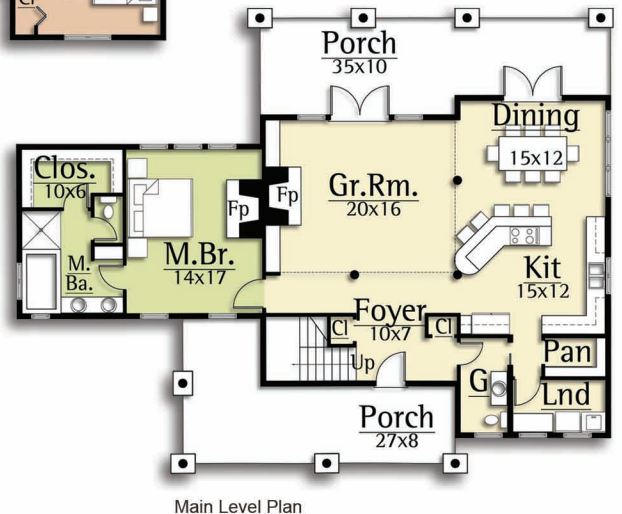
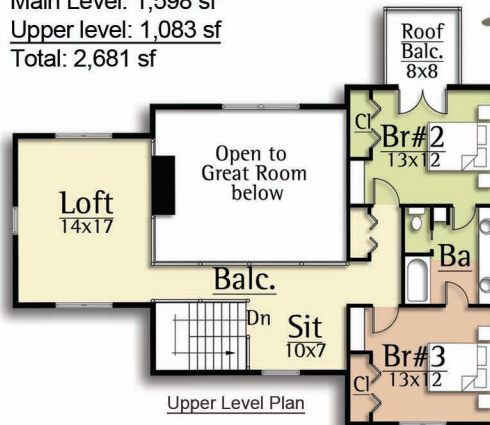


## CANVASBACK

Main Level: 1,598 sf  
Upper level: 1,083 sf  
Total: 2,681 sf

The Canvasback features:

- 3 bedrooms
- 2.5 baths
- Vaulted Great Room
- Open Kitchen/Dining/Living
- Timber beams and trusses



1-440-564-1090  
WWW.HEAVYTIMBERS.COM

DESIGN BY

MOSSCREEK

WWW.MOSSCREEK.NET

800.737.2166