

# HEAVY TIMBER TRUSS & FRAME RETREAT SERIES

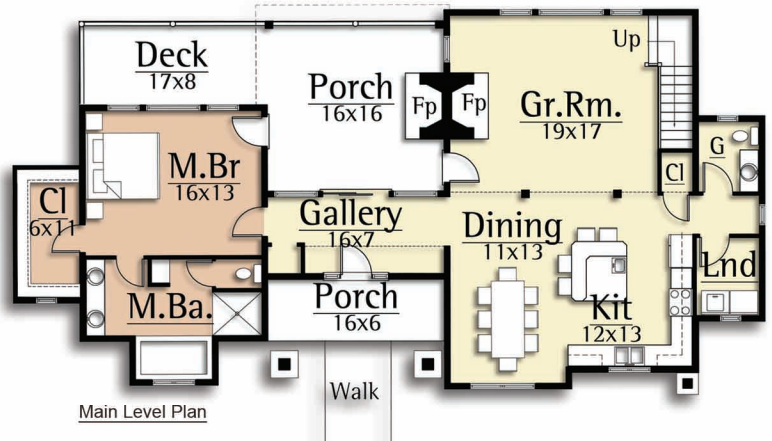
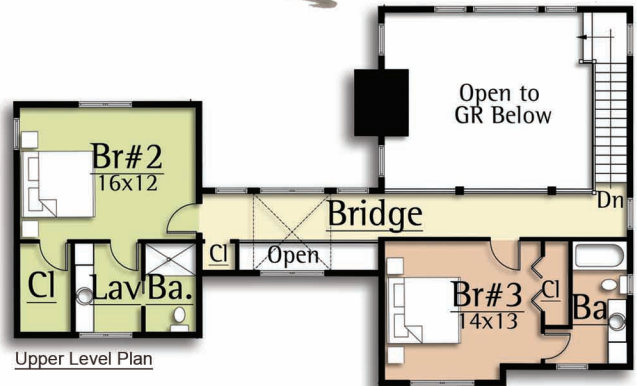


## DECOY

Main Level: 1,570 sf  
Upper level: 800 sf  
Total: 2,370 sf

The Decoy features:

- 3 bedrooms
- 3.5 baths
- Vaulted Great Room
- Open Kitchen/Dining/Living
- Timber beams and trusses



1-440-564-1090  
WWW.HEAVYTIMBERS.COM

DESIGN BY

MOSSCREEK

WWW.MOSSCREEK.NET

800.737.2166