

HEAVY TIMBER TRUSS & FRAME RETREAT SERIES

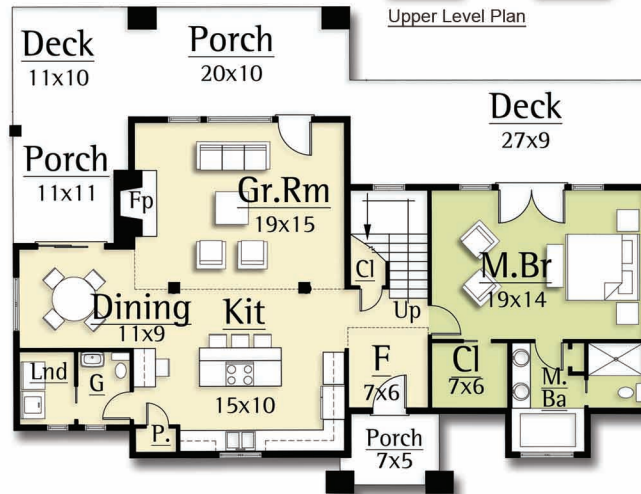
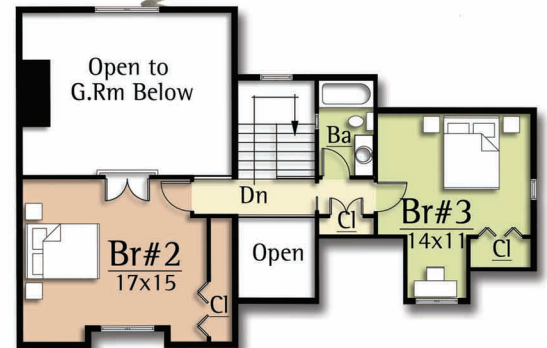


PINTAIL

Main Level: 1,391 sf
Upper level: 706 sf
Total: 2,097 sf

The Pintail features:

- 3 bedrooms
- 2.5 baths
- Vaulted Great Room
- Open Kitchen/Dining/Living
- Timber beams and trusses



1-440-564-1090
WWW.HEAVYTIMBERS.COM

DESIGN BY

MOSSCREEK

WWW.MOSSCREEK.NET

800.737.2166