

HEAVY TIMBER TRUSS & FRAME RETREAT SERIES

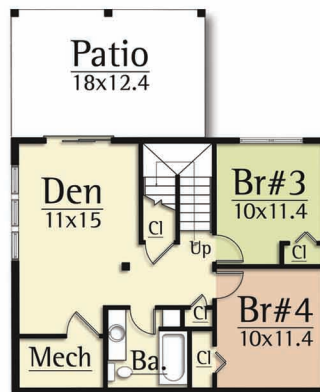
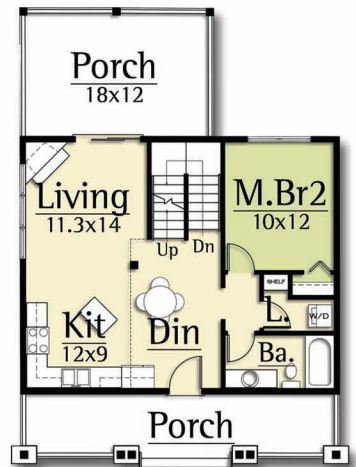
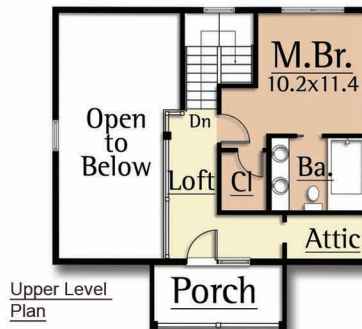


CIDER MILL

Main Level: 712 sf
 Upper level: 400 sf
 Total: 1,112 sf
 Optional Lower Level: 712 sf

The Cider Mill features:

- 2 bedrooms
- 2 bath
- Vaulted Living Room ceiling
- Open Kitchen/Dining/Living
- Timber beams and trusses
- Optional lower level with 2 bedrooms



1-440-564-1090
 WWW.HEAVYTIMBERS.COM

DESIGN BY

MOSSCREEK

WWW.MOSSCREEK.NET

WWW.MOSSCREEK.NET

800.737.2166